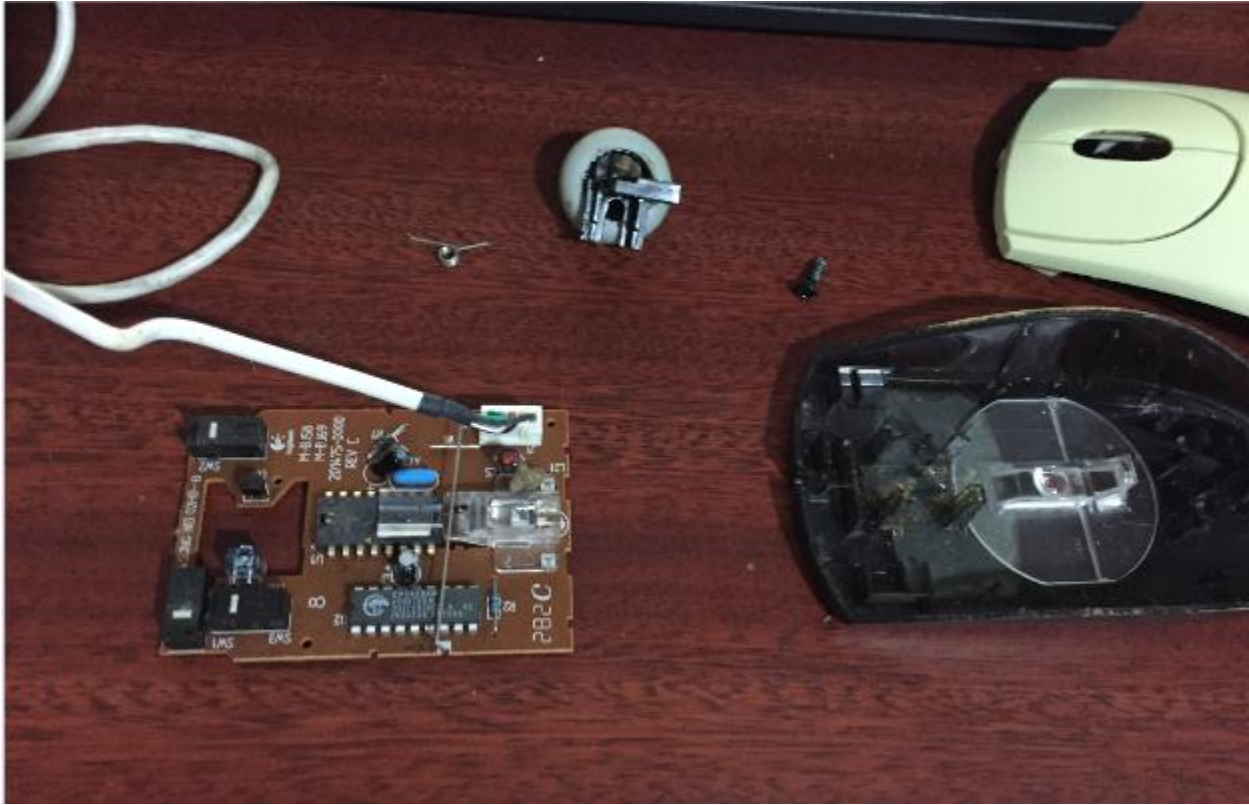


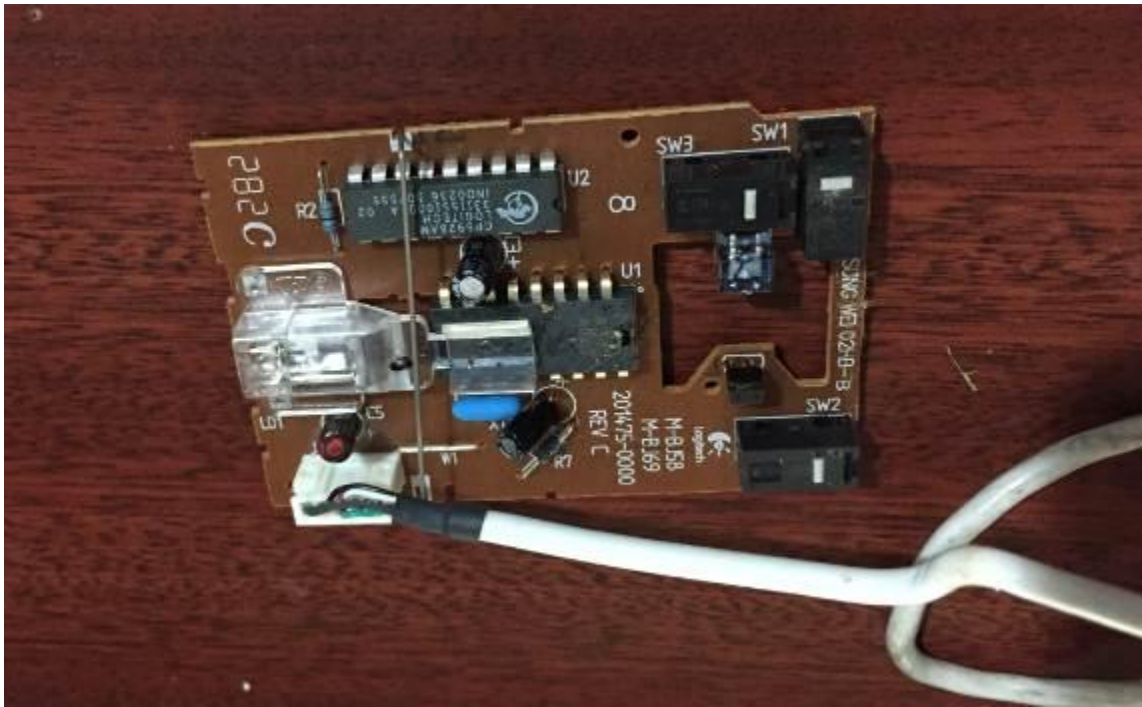
Found a working mouse



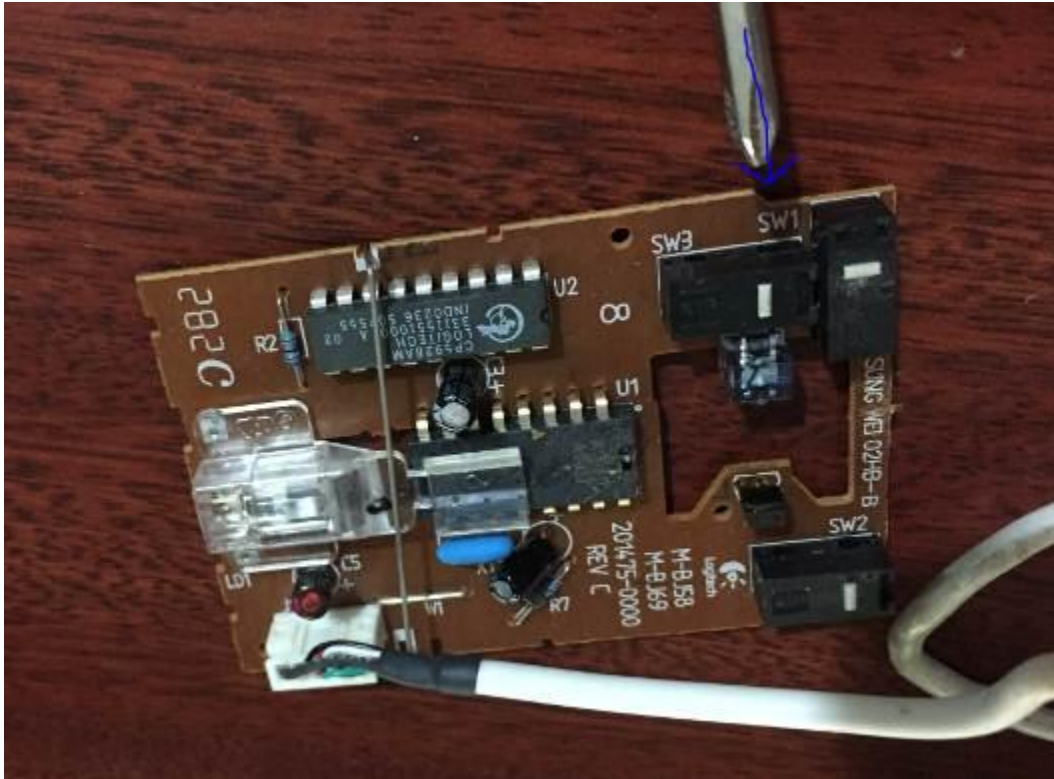
Disassemble the mouse



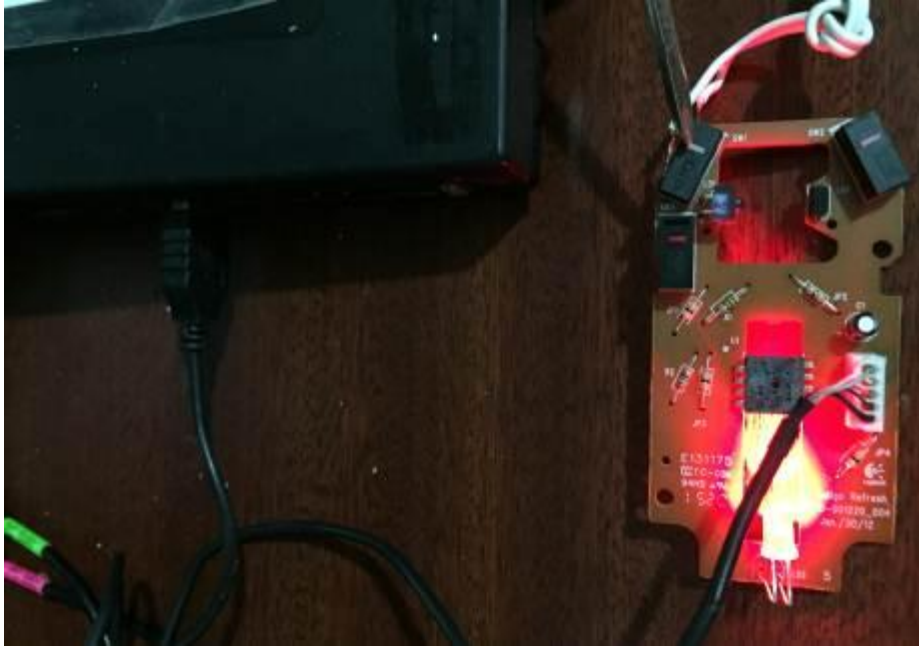
This is the board that we need.
Keep the USB cable attached



In some mouse models the right button comes with two switches



Connect the USB mouse cable to identify the correct switch (if required). Press the button to activate any computer icon



This is the mouse switch that we need to bypass



Weld a cable in the two ports of the switch that bring the “open” position (use a multimeter to find the ports)



Connect the cable to the Morse key



You can use a project box to protect the board



Conect the USB cable to the OTG adapter and connect the cable to your tablet or telephone



I find today that it works on the tablet and the phone



To enter the first time use your finger to tap the program.

After that you can use the Key
Enjoy and practice practice
practice